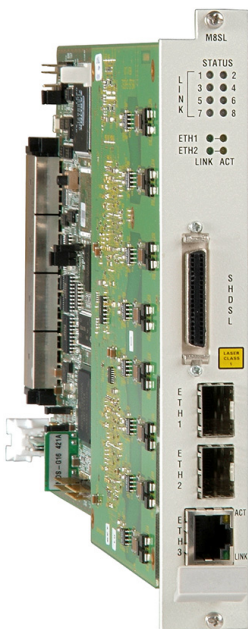


Megaplex-4100 Module

M8SL

8-Port SHDSL E1 Module

- Each port transmits up to 2048 kbps payload over 2-wire copper cables
- Range up to 10.6 km (6.6 miles) over 26 AWG 2-wire cable
- Remote or Central function programmable per channel
- Supports inband management (EOC) according to G.991.2 and dedicated TS via one of the timeslots
- Compatible with other RAD's SHDSL interface products



Complies with SHDSL standard according to ITU-T Rec. G.991.2

The Megaplex M8SL module uses Single-pair High speed Digital Subscriber Line (SHDSL) technology, as standardized by ITU-T Rec. G.991.2. This SHDSL E1 module offers a cost-effective solution for delivering digital data to customer premises over the existing copper cables of the distribution network while eliminating the need for repeaters.

Each M8SL module port is a multirate SHDSL modem supporting user-selectable data rates which are multiples of 64 kbps, starting from 192 kbps up to 2048 kbps (32 timeslots). As the payload increases, range decreases. *Table 1* lists typical range distance versus the payload data rate.

The M8SL module is user-configurable for operation in accordance with the following standards:

- ITU-T Rec. G.991.2. Annex B (for compatibility with European, or similar, networks)
- Annex A (for compatibility with North American, or similar, networks)

The module can operate as a Central (STU-C) or Remote (STU-R) SHDSL Terminal Unit (programmable per module channel) opposite the ASMi-52, LRS-52, FCD-IP or FCD-IPM devices.

Diagnostic capabilities include local and remote loopback on the port, and inband code-activated loopbacks specified in ANSI T1E1.2/93-003.

Performance statistics for the port may be obtained and analyzed via the Megaplex management system.

Specifications

SHDSL PORTS

Number of Ports per Module

8

Compliance

ITU-T G.991.2 Annex A/B (SHDSL Standard)

Transmitting

Up to 16.8 dBm line power

Signal Format

TC-PAM

Transmission Line

Single unconditioned twisted pair

Impedance

135 Ω

Connector

SCSI-40, convertible to 8 RJ-45 connectors via adaptor cable



data communications

Innovative Access Solutions

Typical Ranges

Depend on the data rate and the cable diameter. For 26 AWG (0.4mm) cable with 13.5 dBm line power, see *Table 1*.

INDICATORS

Dual-color indicator (per link)

- Lights steadily in green when the port is connected and carries traffic
- Flashes in red during handshaking between the M8SL port and the remote unit
- Flashes in green when the port is connected and is the standby port in a redundancy pair
- Lights in red during local loss of synchronization or red alarm
- Off when not connected

Table 1. Typical Ranges

Data Rate	Range	
[kbps]	[km]	[ft]
192	10.6	35.000
256	8.2	27.000
768	6.5	21.500
1544	4.9	16.200
2048	4.0	13.000

DIAGNOSTICS

Performance Monitoring

Per ITU-T Rec G.991.2

Loopbacks

- User-activated local and remote loopback on each port
- Local timeslot loopback
- Remote timeslot loopback
- Remote loopback on the remote unit

GENERAL

Power Consumption

15W

Ordering

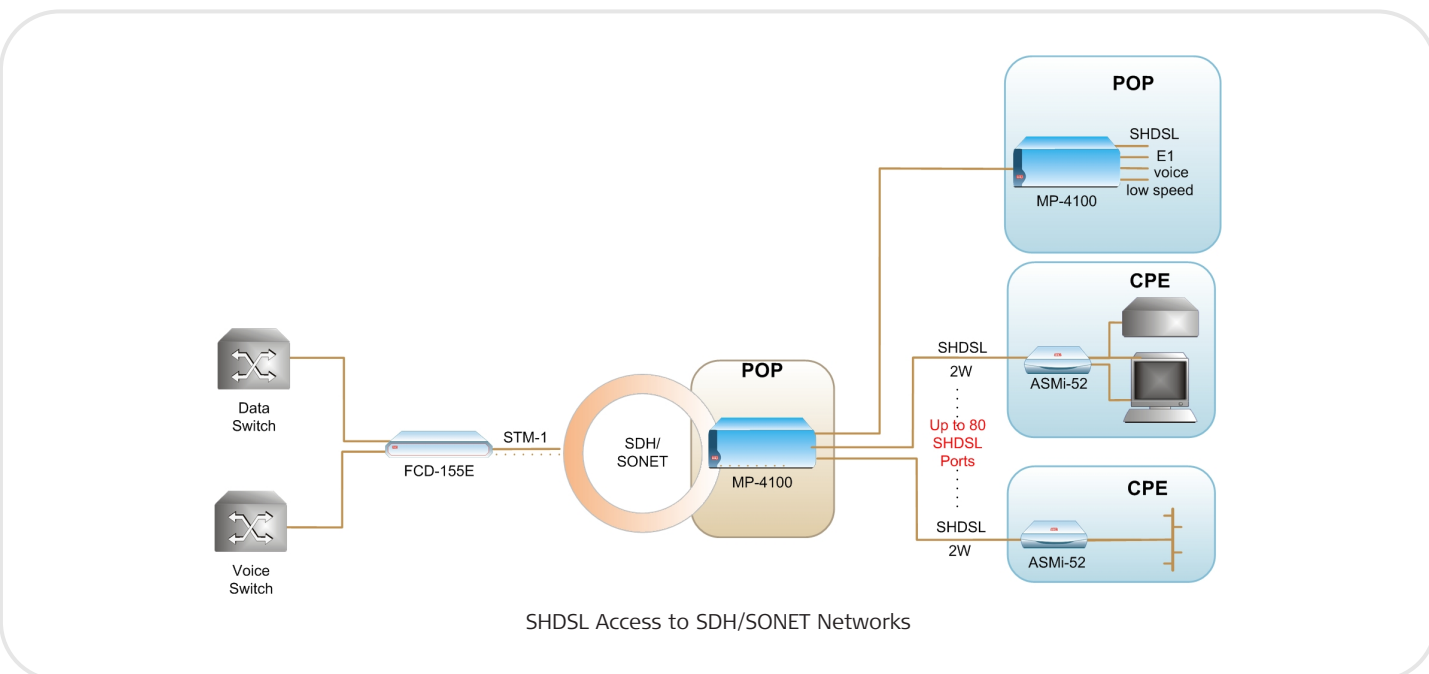
MP-4100M-8/SL

8-Port E1 module with 2-wire SHDSL interface for Megaplex-4100

OPTIONAL ACCESSORIES

CBL-MSL8-SCS40/RJ45

Cable for splitting the M8SL single 40-pin SCSI connector to 8 x RJ-45 connectors



International Headquarters

24 Raoul Wallenberg Street
Tel Aviv 69719, Israel
Tel. 972-3-6458181
Fax 972-3-6498250, 6474436
E-mail market@rad.com

North America Headquarters

900 Corporate Drive
Mahwah, NJ 07430, USA
Tel. 201-5291100
Toll free 1-800-4447234
Fax 201-5295777
E-mail market@radusa.com

www.rad.com

Order from: Cutter Networks

Ph:727-398-5252/Fax:727-397-9610

www.bestdatasource.com



data communications

Innovative Access Solutions